

# GF Urecon Installation & Fittings PUR-SplitTube™

U.I.P.® insulation for field installation &  
Field insulation for fittings  
Buried application





# GF Urecon Installation Recommendation #84 PUR-SplitTube™

## Field insulation for fittings Buried application

### + General overview

This document is intended as a general guideline for the insulation of fittings when using the PUR-SplitTube product.

#### Materials supplied with PST

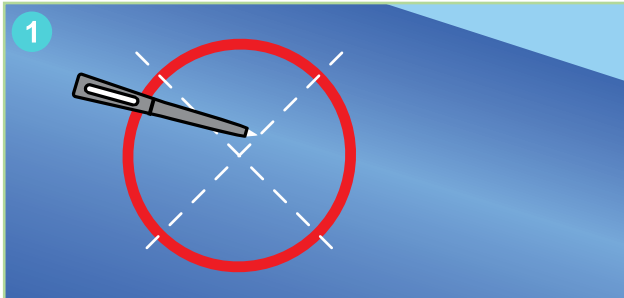
- 1 roll Mastic tape P-TAPE-330L-35-BK-04-50

#### Materials needed on site (by others)

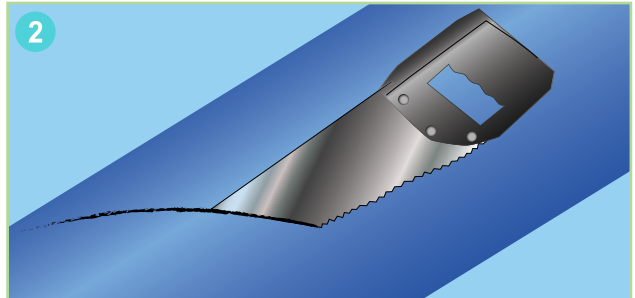
- 1 handsaw
- 1 « carpenter » Knife
- 1 sharpie
- 1 tube Gorilla polyurethane expanding Glue
- 1 Water spray bottle
- Safety Gloves
- Dust mask
- Eye protection
- Measuring tape
- Cleaning cloth



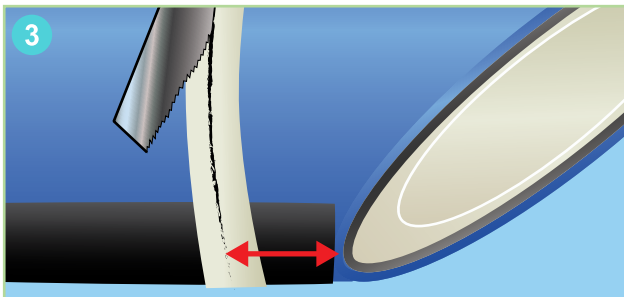
### A. Insulating an Elbow - Quick Reference Guide



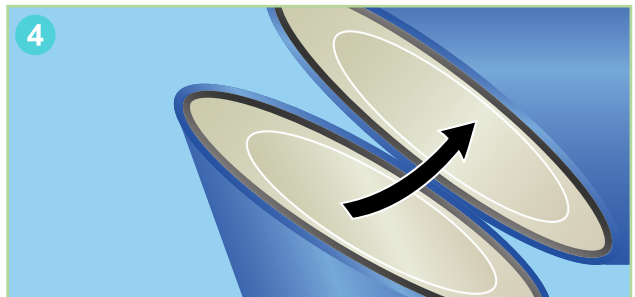
Based on the elbow radius and angle, mark with a black Sharpie the blue outer-jacket with the appropriate miter angle. (figure 1)



Using a handsaw, cut the PUR-SplitTube at markings. Make sure to cut slowly the black mastic tape as not to tear it away. (figure 2)



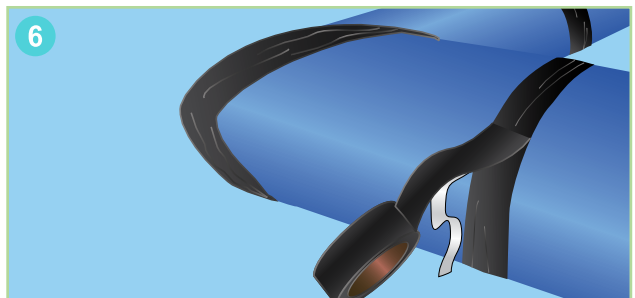
Make sure when cutting, the pieces at each ends of the elbow, have a inside heel at least 2" in length to allow the taping. (figure 3)



Fit the sections over the elbow. If there are small gaps or slight imperfections, apply a small amount of glue on one side of the facing cut sections of the insulation and wait for the glue to set. (figure 4)

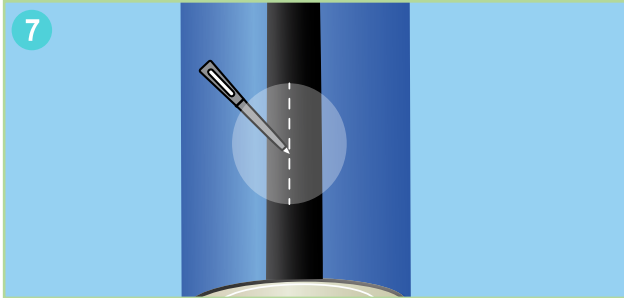


Once the miters are joined together, place the new insulation form around the elbow. Seal the miters all around with a layer of black mastic tape. (figure 5)

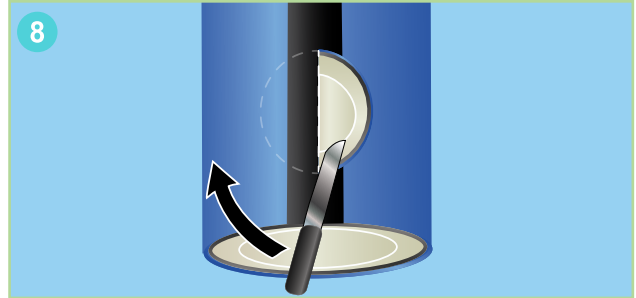


Seal the face connection between insulation fitting and PST pipe insulation. (figure 6)

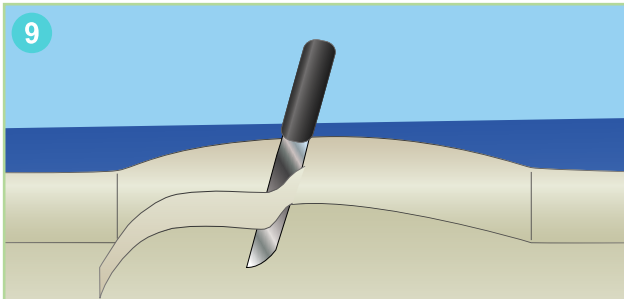
## B. Insulating a tee - Quick Reference Guide



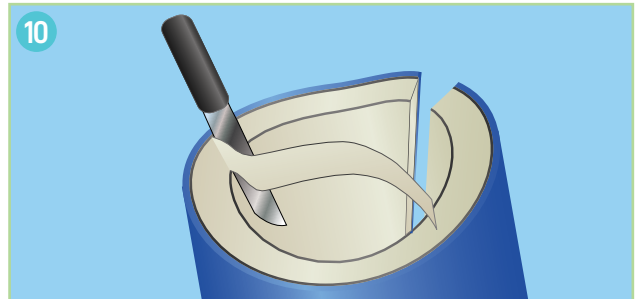
7  
Measure the length of the tee main, if the tee length is smaller than the outside diameter (OD) of the PST, use the PST OD dimension add 6" as the PST main tee length. If longer, use the length of the tee main. Mark the opening required for the tee branch on the seam of the PST.



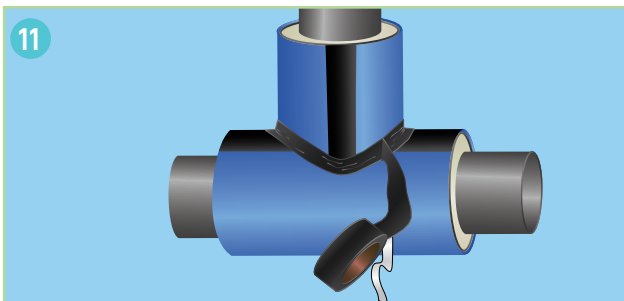
8  
Carve the diameter out. (figure 7 & 8)



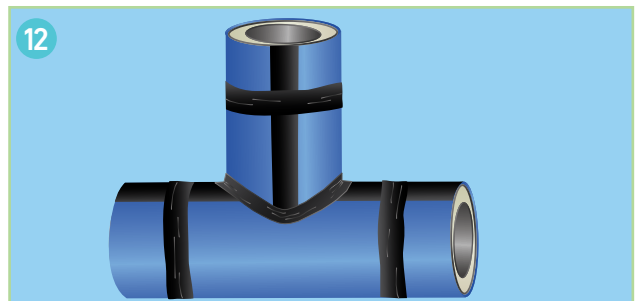
9  
Trim the chimney opening at an angle in order to allow closing around the bare fitting branch.



10  
Measure the height of the tee branch from the centerline of the main to the top of the branch, If the height is less than half of the PST OD, then add 6" to PST section to be cut for the chimney. Cut the bottom of the PST chimney piece, into a saddle shape to rest on top of the main insulation. (figure 11)



11  
Apply glue at the connecting sections and wait for the glue to set. Once the connections are set, apply the back mastic tape at the corners of the chimney to seal the connection.



12  
Apply butyl mastic tape at the extensions of the insulation to seal to the PST insulation tube adjacent to the installation.

**C. Insulating bell x spigot or solvent weld socket pipe joints**

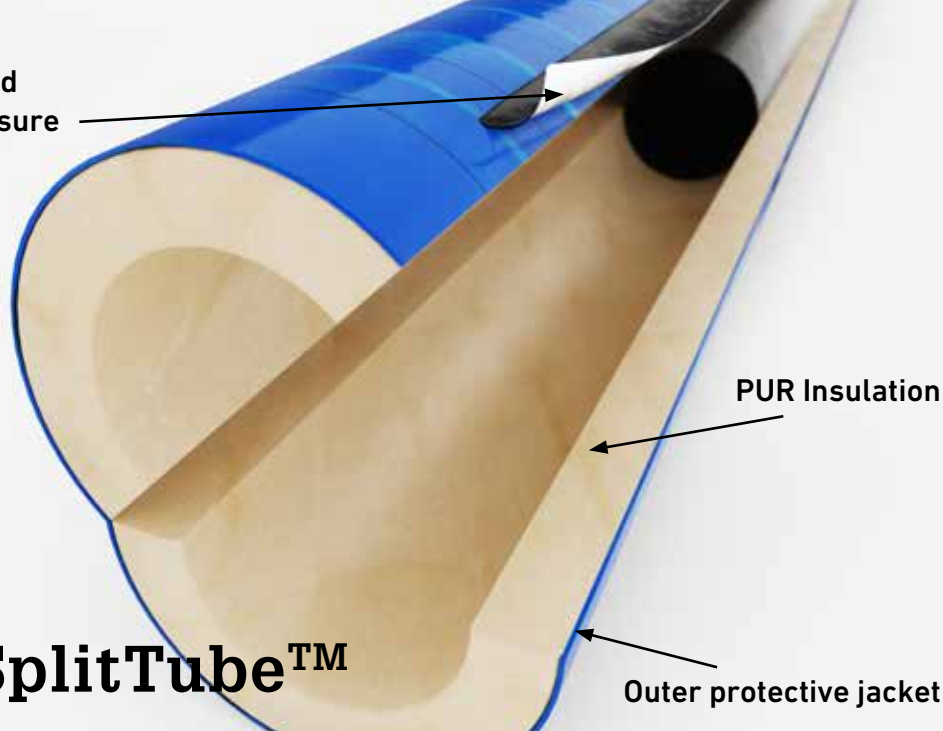
1. Measure the outside diameter of Bell or socket/coupling, if the OD is bigger than ½" of the PST inside diameter, use the bigger size PST length provided
2. Measure the length of the socket/coupling and Bell, cut the appropriate length of the bigger PST
3. Apply in a linear shape a small amount of glue on one side of the facing cut sections of the insulation. Then, spray the glue with water (if there are small insulation gaps, apply a slightly thicker amount of glue)
4. Once set, using the mastic tape, apply a round on each end of the PST joint section

**Note: If the method of joining involves a bell x spigot at fittings, use the bigger size PST provided and insulate as indicated in section A and B.**

*Note: Physical characteristics are nominal and may vary depending on pipe type and diameter.*



Factory applied  
peel-away closure



## PUR-SplitTube™

Outer protective jacket

## U.I.P.® insulation for field installation Buried application

### General overview

Your PUR-SplitTube (PST) consists of long preformed polyurethane insulation tube with PE tape covering. The tubes can be opened up to install around bar straight plain ends pipe and then sealed with the integrated longitudinal PE seal tape.

### Storage and handling

The PUR-SplitTube (PST) may be unloaded from the trucks by hand (figure 1). The PST should be stored on a smooth surface such as sand, soil or smooth fine gravel. Do not store the PST on sharp rocks bedding. The PST can be stacked up to 1 meter in height. As the PST is light in weight, make sure that the PST are protected from wind, and wind gusts, by covering the stock pile and anchoring the cover.

### Materials supplied

- PUR-SplitTube in 20 ft sections
- 6 in (150 mm) wide hand roll tape

### Additional material and tools required

- Cutter



## Installation on pipes

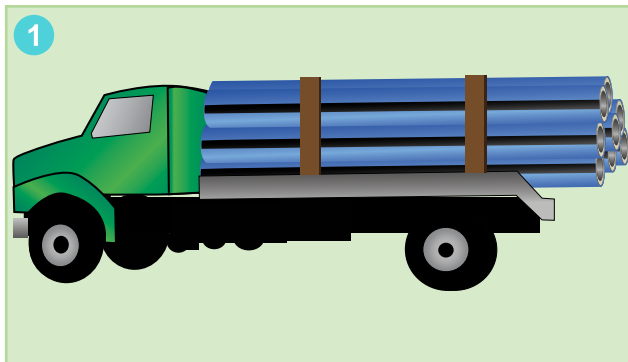


Figure 1: Storage and handling.

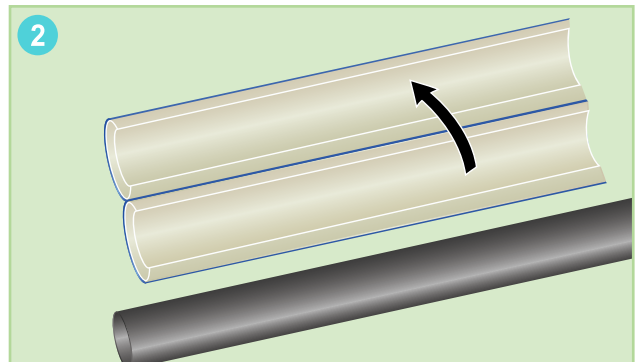


Figure 2: Installing the PST around the Pipe.

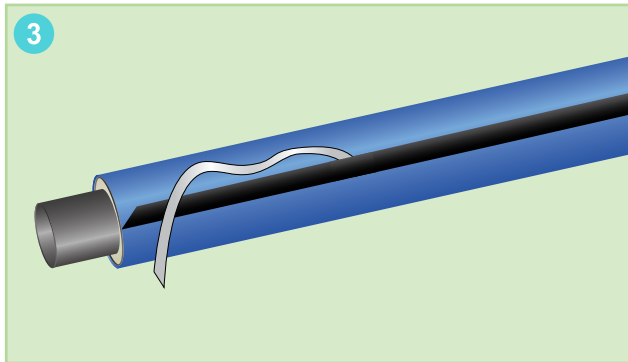


Figure 3: Applying the longitudinal closure seal.

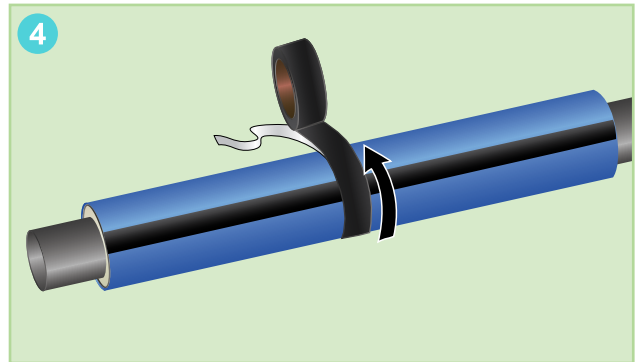


Figure 4: sealing the joint between two PST lengths.

- Place a length of PST on flat surface beside the pipe to be insulated.
- Rotate the PST so that the longitudinal black tape is on the top.
- Open the PST by cutting the packing tape holding the tube closed. **BEWARE: Do not cut the black PE tape.**
- Once the PST is open position the pipe inside the insulation tube (**figure 2**).
- Close the PST around the pipe by applying hand pressure until the insulation grooves are fitted together.
- While still applying the hand pressure, peel away protective blue backing on the black longitudinal black tape and push down the black closure on PST blue surface (**figure 3**).
- Apply sufficient tension and smooth the surface to obtain a uniform bond.
- Slide the installed PST into its position, and repeat the process for a new installation on a 20 ft bare section of the pipe.
- To connect/seal 2 lengths of PST together, push/slide the lengths together for a tight fit.
- Using the hand roll tape, center and wrap the tape around the connection of the 2 lengths. Allow for 2 in overlap.

## Installation on fittings

Fittings can be insulated directly onsite by cutting, trimming PST sections and assembled to properly fit over the fitting. The assembly can be finished with the hand-roll tape.

For customized fittings from GF Urecon, standard delivery time applies



# Worldwide at home

Our sales companies and representatives ensure local customer support in over 100 countries.

## Argentina / Southern South America

Georg Fischer Central Plastics  
Sudamérica S.R.L.  
Buenos Aires, Argentina  
Phone +54 11 4512 02 90  
gfcentral.ps.ar@georgfischer.com  
www.gfps.com/ar

## Australia

George Fischer Pty Ltd  
Riverwood NSW 2210 Australia  
Phone +61 (0) 2 9502 8000  
australia.ps@georgfischer.com  
www.gfps.com/au

## Austria

Georg Fischer  
Rohrleitungssysteme GmbH  
3130 Herzogenburg  
Phone +43 (0) 2782 856 43-0  
austria.ps@georgfischer.com  
www.gfps.com/at

## Belgium / Luxembourg

Georg Fischer NV/SA  
1070 Bruxelles/Brüssel  
Phone +32 (0) 2 556 40 20  
be.ps@georgfischer.com  
www.gfps.com/be

## Brazil

Georg Fischer Sist. de Tub. Ltda.  
04795-100 São Paulo  
Phone +55 (0) 11 5525 1311  
br.ps@georgfischer.com  
www.gfps.com/br

## Canada

Georg Fischer Piping Systems Ltd  
Mississauga, ON L5T 2B2  
Phone +1 (905) 670 8005  
Fax +1 (905) 670 8513  
ca.ps@georgfischer.com  
www.gfps.com/ca

## China

Georg Fischer Piping Systems Ltd  
Shanghai 201319  
Phone +86 21 3899 3899  
china.ps@georgfischer.com  
www.gfps.com/cn

## Denmark / Iceland

Georg Fischer A/S  
2630 Taastrup  
Phone +45 (0) 70 22 19 75  
info.dk.ps@georgfischer.com  
www.gfps.com/dk

## Finland

Georg Fischer AB  
01510 VANTAA  
Phone +358 (0) 9 586 58 25  
Fax +358 (0) 9 586 58 29  
info.fi.ps@georgfischer.com  
www.gfps.com/fi

## France

Georg Fischer SAS  
95932 Roissy Charles de Gaulle Cedex  
Phone +33 (0) 1 41 84 68 84  
fr.ps@georgfischer.com  
www.gfps.com/fr

## Germany

Georg Fischer GmbH  
73095 Albershausen  
Phone +49 (0) 71 61 302-0  
info.de.ps@georgfischer.com  
www.gfps.com/de

## India

Georg Fischer Piping Systems Ltd  
400 076 Mumbai  
Phone +91 224007 2001  
branchoffice@georgfischer.com  
www.gfps.com/in

## Indonesia

George Fischer Pte Ltd –  
Representative Office  
Phone +62 21 2900 8564  
Fax +62 21 2900 8566  
sgp.ps@georgfischer.com  
www.gfps.com/sg

## Italy

Georg Fischer S.p.A.  
20063 Cernusco S/N (MI)  
Phone +39 02 921 861  
it.ps@georgfischer.com  
www.gfps.com/it

## Japan

Georg Fischer Ltd  
556-0011 Osaka,  
Phone +81 (0) 6 6635 2691  
jp.ps@georgfischer.com  
www.gfps.com/jp

## Korea

GF Piping Systems  
Georg Fischer Korea Co., Ltd.  
Unit 2501, U-Tower  
120 HeungdeokJungang-ro (Yeongdeok-dong)  
Giheung-gu, Yongin-si, Gyeonggi-do, Korea  
Phone: +82 31 8017 1450  
Fax: +82 31 217 1454  
kor.ps@georgfischer.com  
www.gfps.com/kr

## Malaysia

George Fischer (M) Sdn. Bhd.  
40460 Shah Alam, Selangor Darul Ehsan  
Phone +60 (0) 3 5122 5585  
Fax +603 5122 5575  
my.ps@georgfischer.com  
www.gfps.com/my

## Mexico / Northern Latin America

Georg Fischer S.A. de C.V.  
Apodaca, Nuevo Leon  
CP66636 Mexico  
Phone +52 (81) 1340 8586  
Fax +52 (81) 1522 8906  
mx.ps@georgfischer.com  
www.gfps.com/mx

## Middle East

Georg Fischer  
Piping Systems (Switzerland) Ltd  
Dubai, United Arab Emirates  
Phone +971 4 289 49 60  
gcc.ps@georgfischer.com  
www.gfps.com/int

## Netherlands

Georg Fischer N.V.  
8161 PA Epe  
Phone +31 (0) 578 678 222  
nl.ps@georgfischer.com  
www.gfps.com/nl

## Norway

Georg Fischer AS  
1351 Rud  
Phone +47 67 18 29 00  
no.ps@georgfischer.com  
www.gfps.com/no

## Philippines

Georg Fischer Pte Ltd  
Representative Office  
Phone +632 571 2365  
Fax +632 571 2368  
sgp.ps@georgfischer.com  
www.gfps.com/sg

## Poland

Georg Fischer Sp. z o.o.  
05-090 Sekocin Nowy  
Phone +48 (0) 22 31 31 0 50  
poland.ps@georgfischer.com  
www.gfps.com/pl

## Romania

Georg Fischer  
Piping Systems (Switzerland) Ltd  
020257 Bucharest - Sector 2  
Phone +40 (0) 21 230 53 80  
ro.ps@georgfischer.com  
www.gfps.com/int

## Russia

Georg Fischer  
Piping Systems (Switzerland) Ltd  
Moscow 125047  
Phone +7 495 258 60 80  
ru.ps@georgfischer.com  
www.gfps.com/ru

## Singapore

Georg Fischer Pte Ltd  
11 Tampines Street 92, #04-01/07  
528 872 Singapore  
Phone +65 6747 0611  
Fax +65 6747 0577  
sgp.ps@georgfischer.com  
www.gfps.com/sg

## Spain / Portugal

Georg Fischer S.A.  
28046 Madrid  
Phone +34 (0) 91 781 98 90  
es.ps@georgfischer.com  
www.gfps.com/es

## Sweden

Georg Fischer AB  
117 43 Stockholm  
Phone +46 (0) 8 506 775 00  
info.se.ps@georgfischer.com  
www.gfps.com/se

## Switzerland

Georg Fischer  
Rohrleitungssysteme (Schweiz) AG  
8201 Schaffhausen  
Phone +41 (0) 52 631 30 26  
ch.ps@georgfischer.com  
www.gfps.com/ch

## Taiwan

Georg Fischer Co., Ltd  
San Chung Dist., New Taipei City  
Phone +886 2 8512 2822  
Fax +886 2 8512 2823  
www.gfps.com/tw

## United Kingdom / Ireland

George Fischer Sales Limited  
Coventry, CV2 2ST  
Phone +44 (0) 2476 535 535  
uk.ps@georgfischer.com  
www.gfps.com/uk

## USA / Caribbean

Georg Fischer LLC  
9271 Jeronimo Road  
92618 Irvine, CA  
Phone +1 714 731 88 00  
Fax +1 714 731 62 01  
us.ps@georgfischer.com  
www.gfps.com/us

## International

Georg Fischer  
Piping Systems (Switzerland) Ltd  
8201 Schaffhausen/Switzerland  
Phone +41 (0) 52 631 30 03  
Fax +41 (0) 52 631 28 93  
info.export@georgfischer.com  
www.gfps.com/int

## GF Piping Systems

### Urecon (Alberta)

5010 - 43rd. Avenue,

P.O. Box 210

Calmar, Alberta

T0C 0V0

T: 780.985.3636

urecon.can@georgfischer.com

urecon.com/PST

gfps.com/us/urecon

## GF Piping Systems

### Urecon (Quebec)

75 Dupont Blvd.

Coteau-du-Lac, Quebec

J0P 1B0

T: 450.455.0961

urecon.can@georgfischer.com

urecon.com/PST

gfps.com/us/urecon

The technical data are not binding. They neither constitute expressly warranted characteristics nor guaranteed properties nor a guaranteed durability. They are subject to modification. Our General Terms of Sale apply.